

LogicAll Solutions TrailBlazer User Manual

1.0.0.0 – Main Screen

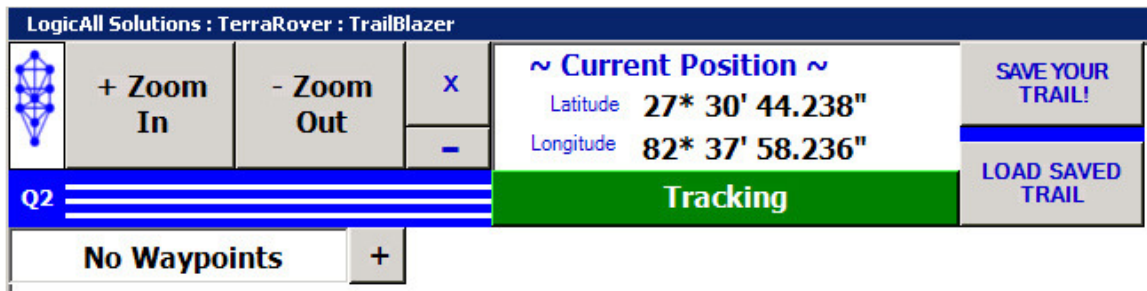
- 1.0.1.0 – Help Button
- 1.0.1.1 – Zoom Buttons
- 1.0.1.2 – Exit and Minimize Buttons
- 1.0.1.3 – Position Display
- 1.0.1.4 – Course Display
- 1.0.1.5 – Current Waypoint and Range
- 1.0.1.6 – Show Trail button
- 1.0.1.7 – Saving and Loading your Trail

2.0.0.0 – Help Screen

- 2.0.1.0 – Location button
- 2.0.1.1 – Quadrant Selection

1.0.0.0 – Main Screen

Primary operation screen, showing current processing information and GPS position in relation to waypoints and your Trail.



1.0.1.0 – LAS logo – Clicking on the LAS logo will bring up the help/about screen for the application. Support contact information and the Locations button are available from here.

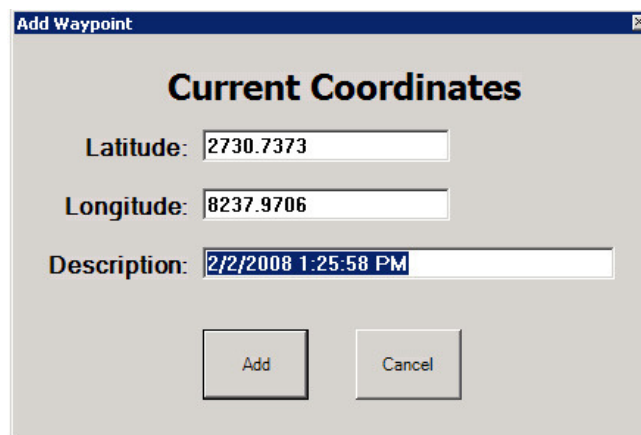
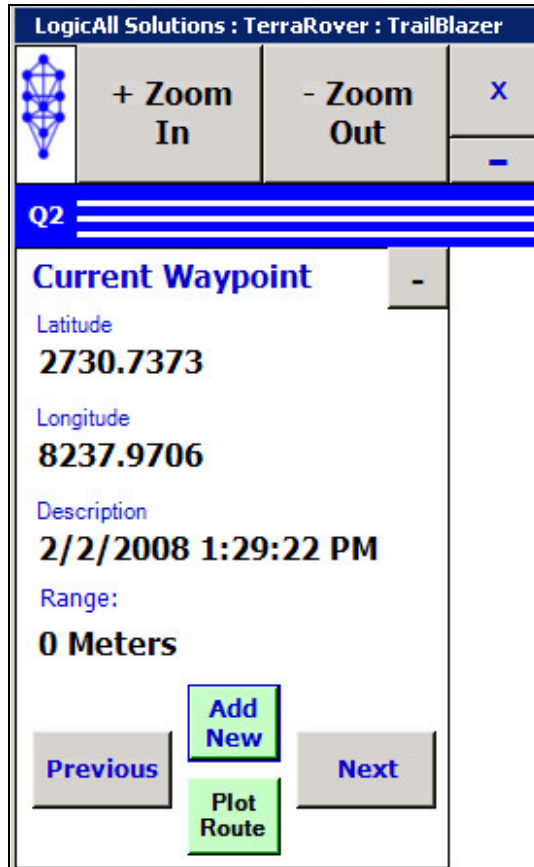
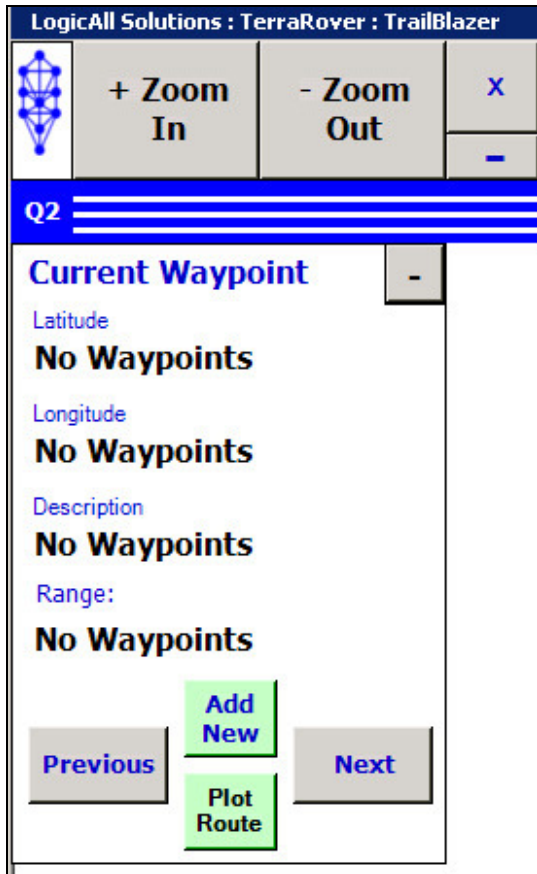
1.0.1.1 – Zoom buttons – Clicking these buttons will cause the Map display to zoom in and out.

1.0.1.2 – Exit and Minimize buttons – Clicking these buttons will close or minimize the application. If you want to use the Trail function of the software, be sure to click the "Save Your Trail!" button before you exit so you can reload your trail when you are ready to return.

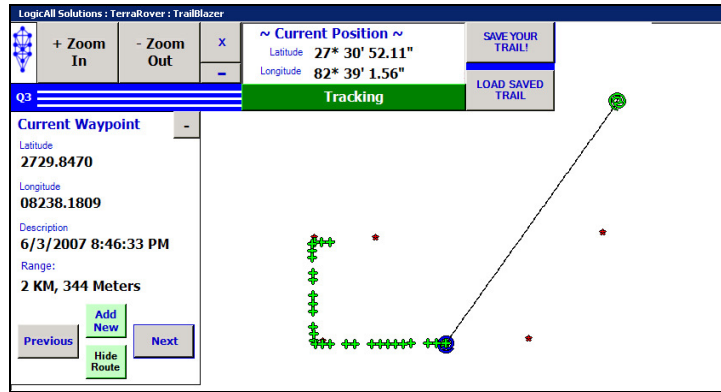
1.0.1.3 – Position Display – This display block indicates the current GPS coordinates being reported by the GPS receiver.

1.0.1.4 – Course Display – If a waypoint target is currently selected by the operator, the operator can also click the "Plot Route" and a line will be created between your current position and the selected waypoint. The line will indicate the direction the vehicle should travel to reach the target. Using this information can assist the user if a compass is unavailable.

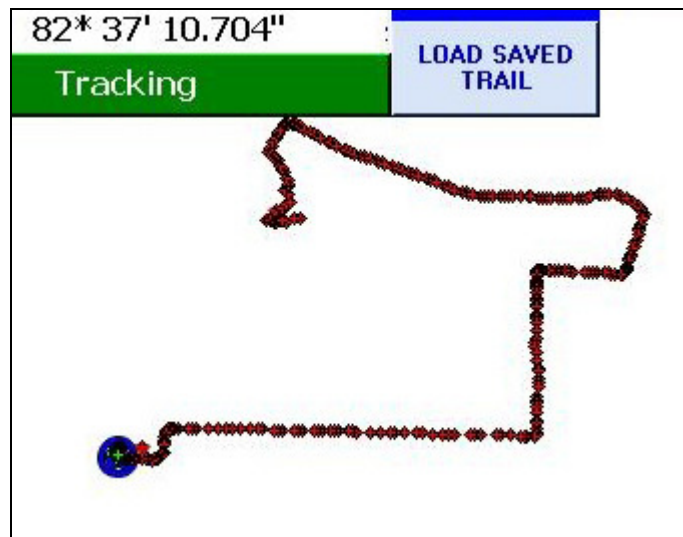
1.0.1.5 – Current Waypoint and Range – If no waypoints are in the system, the Current Waypoint window will be minimized and a button with a plus (+) sign will be displayed next to the text “No Waypoints.” Clicking on this button will cause the Current Waypoint window to open and you can click the “Add New” button to add your current location as a waypoint.



1.0.1.6 – Show Trail button – Clicking this button will cause the application to display a trail of markers where the vehicle has been. The application will start up automatically leaving a trail behind you. If you want the trail off, click the button. Clicking it again will turn the trail function back on.

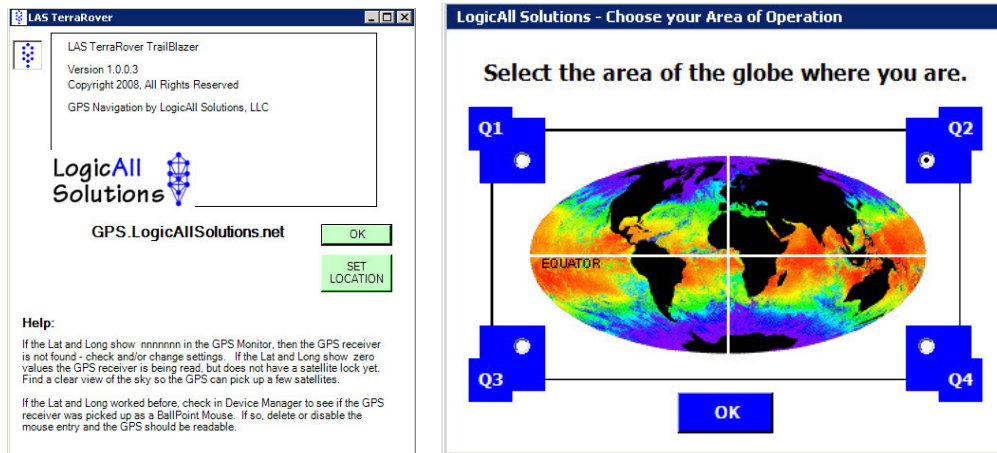


1.0.1.7 – “Save Your Trail” and “Load Saved Trail” buttons – Clicking the “Save Your Trail” button will record your trail as it appears on the screen and stores it so you can load it later to either find your way back or to show another. When you start up the TrailBlazer to travel to another location or return to your previous location you can click the “Load Saved Trail” button and your saved trail is loaded and displayed on the screen. Each time you save your trail, the previous trail will be overwritten.



2.0.0.0 – Help Screen

Help screen brought up by clicking on the LAS logo in the upper left of the screen. Gives access to the Location button and provides a quick help guide.



2.0.1.0 – Location button – Clicking this button will cause the application to display the Quadrant selection screen. You may change your quadrant of operation here. Note that your current quadrant is displayed on the main screen in the upper left.

2.0.1.1 – Quadrant Selection – On this screen, select the global quadrant you will be traveling in and click the "OK" button. This setting will be remembered the next time you start up the application. Note that if you discover you have the wrong quadrant setting, you should correct it and then restart the application.

Thank you for choosing LogicAll Solutions!
For technical support, send emails to support@LogicAllSolutions.net.

gps.LogicAllSolutions.net