

LogicAll Solutions

Example of Collecting Coordinates to Build Production Lines – Part 2 Entering coordinates and displaying Production Lines

Start up the LAS Line Builder application. By default, the application will open the LAS database on the PC if it is present. This would be the case if you are editing waypoints and production lines on a vehicle actively using one of our LAS TerraRover GPS systems. If you are setting up new lines for a vehicle for later transfer, please use the “Load Waypoints from Another Location” button located at the bottom of the window to locate and select the “lasNewLine.mdb” file located in the \DB folder on your USB drive.

Format of Coordinates must be DDMM.MMMM for Degrees, Minutes, Decimal Minutes.

Select a Waypoint from the list below. Update Delete Add

Make your changes here and click Update when done.

pA Latitude	pA Longitude	Waypoint Description	pB Latitude	pB Longitude
3643.8696	11016.0758	Line 1 Seg A	3643.8486	11015.972
3643.8486	11015.972	Line 1 Seg B	3643.866	11015.8772
3643.866	11015.8772	Line 1 Seg C	3643.857	11015.7812
3643.8588	11016.0788	Lin 2 Seg A	3643.8378	11015.9732

Load Waypoints from Another Location
C:\TerraRover\NasMobile.mdb

Add to Waypoints

Any existing waypoints or production lines may be retained or deleted. These will be displayed in the list at the bottom of the window. To edit, delete, or add entries, you will use the Update, Delete, and Add buttons. Updating and deleting entries is accomplished by selecting the entry in the list and then clicking the appropriate button.

LogicAll Solutions

To add waypoints or production lines, use the fields in the right side of the window to enter your coordinates for the two points of the line, enter a description, and click the Add to Waypoints button.

Build your Line here. When you have both GPS coordinates of the line, enter them into the Waypoints Database

Point A

Point B

LINE: Point A Latitude
3643.866

LINE: Point A Longitude
11015.8772

LINE: Point B Latitude
3643.857

LINE: Point B Longitude
11015.7812

LINE: Description
Line 1 Seg C

Clear

Add to Waypoints

Minutes, Decimal Minutes.

top

36.73116 = 3643.8696
110.26793 = 11016.0758

36.73081 = 3643.8486
110.26620 = 11015.972

36.73110 = 3643.866
110.26462 = 11015.8772

36.73095 = 3643.857
110.26302 = 11015.7812

If you have Microsoft Access (not included) you can edit the database files directly. The Line Builder application is provided so that Access is not required to manage waypoints and production lines. When Access opens the database file, the Waypoints data entry form will be displayed automatically. This is the case for both the database resident on the TerraRover GPS system's PC or the Waypoint Transfer database (LASnewLine) which resides in the DB folder on the USB thumb drive used to transfer files.

LAS TerraRover Waypoints				
Point A Latitude	Longitude	Point B Latitude	Longitude	Description
3643.8696	11016.0758	3643.8486	11015.972	Line 1 Seg A
3643.8486	11015.972	3643.866	11015.8772	Line 1 Seg B
		0	0	

LogicAll Solutions

In the case that a coordinate might be entered incorrectly, you can identify it, correct it, restart the Boom Monitor application, and the updated coordinates will be displayed.

The screenshot shows a map with several waypoints labeled 'Line 1 Seg A', 'Line 2 Seg A', 'Line 1 Seg B', 'Line 2 Seg B', 'Line 1 Seg C', and 'Line 2 Seg C'. A red circle highlights a point on the map with the text 'SHOULD BE HERE ... DATA ENTRY ERROR'. Below the map is a data entry window with a table of waypoints. The table has columns for ptA Latitude, ptA Longitude, Waypoint Description, ptB Latitude, and ptB Longitude. The entry for 'Line 2 Seg C' is highlighted in blue. A red circle highlights the value '11015.7584' in the ptA Longitude column. A red arrow points to the text 'oops this should be 110,26462 = 11015.8772 JUST EDIT THE ENTRY!'.

ptA Latitude	ptA Longitude	Waypoint Description	ptB Latitude	ptB Longitude
3643.8588	11016.0788	Lin 2 Seg A	3643.8378	11015.9732
3643.8378	11015.9732	Line 2 Seg B	3643.8552	11015.7584
3643.8552	11015.7584	Line 2 Seg C	3643.845	11015.7812

Load Waypoints from Another Location

C:\TerraRover\lasMobile.mdb

Select the entry to edit, make the change, and click the Update button.

Select a Waypoint from the list
Make your changes here and click Update when done

ptA Latitude	ptA Longitude	Waypoint Description
3643.8552	11015.7584	Line 2 Seg C

LogicAll Solutions

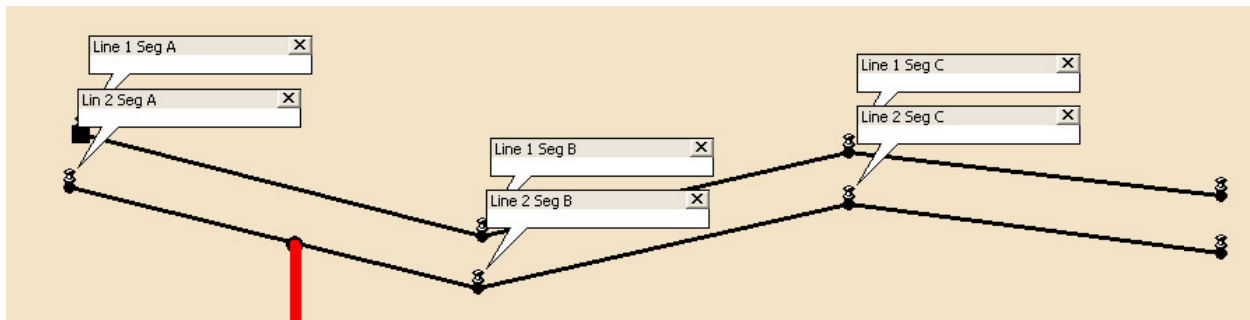
Select a Waypoint from the list below.
Make your changes here and click Update when done.

Update Delete Add

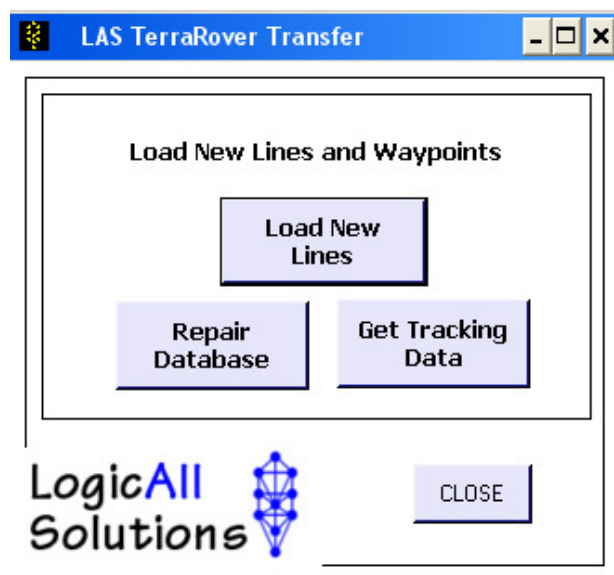
ptA Latitude ptA Longitude Waypoint Description ptB Latitude ptB Longitude

3643.8552 11015.8772 Line 2 Seg C 3643.845 11015.7812

ptA Latitude	ptA Longitude	Waypoint Description	ptB Latitude	ptB Longitude
3643.8588	11016.0788	Lin 2 Seg A	3643.8378	11015.9732
3643.8378	11015.9732	Line 2 Seg B	3643.8552	11015.7584
3643.8552	11015.8772	Line 2 Seg C	3643.845	11015.7812

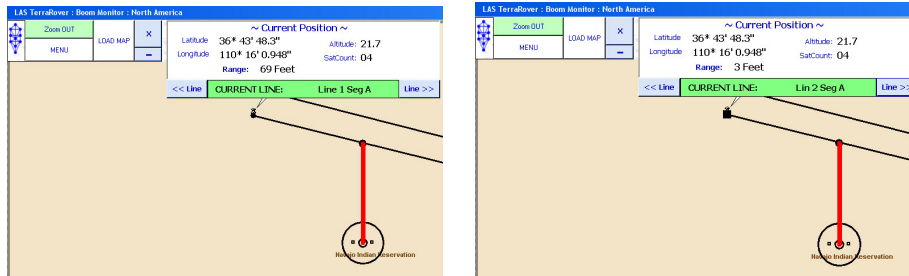


Check your results. If all is well, start the Boom Monitor if you are making the edits on the local PC, or take the USB drive out to the vehicle and use the transfer utility.



LogicAll Solutions

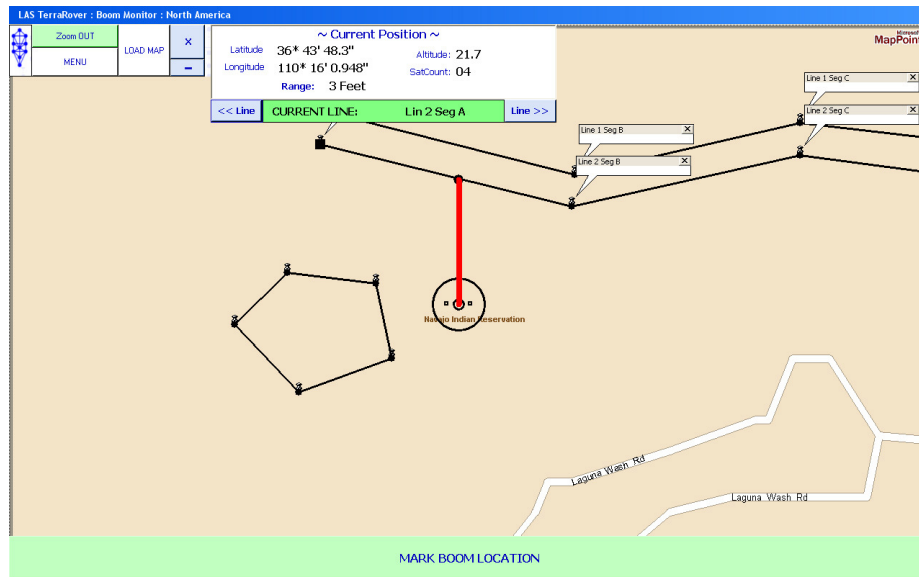
Note that the Range displayed on the screen is based on the distance from the tip of the boom to the currently selected waypoint or production line.



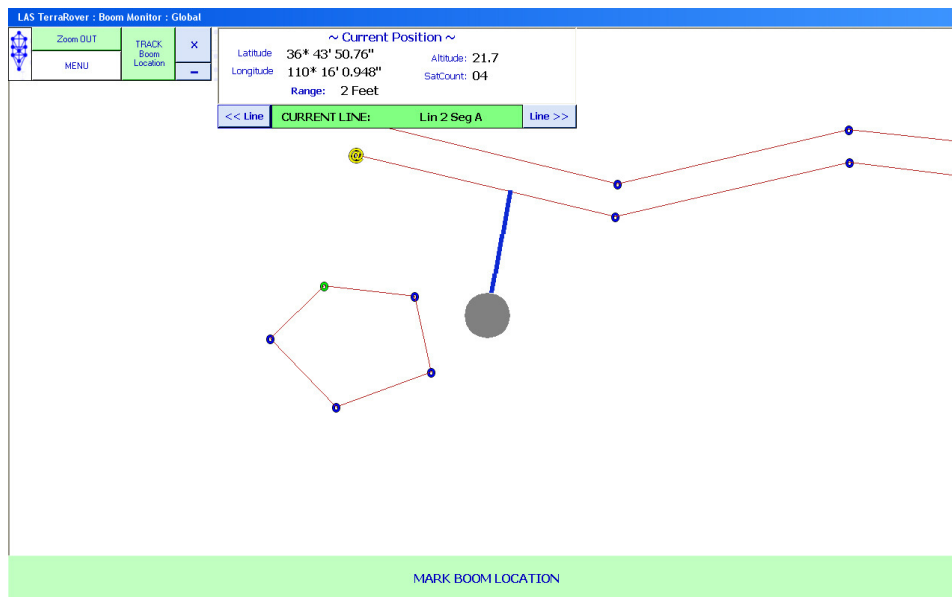
In this image we have added more coordinates to mark a visual geo-fence for the operator to use.

3643.8552	11015.8772	3643.845	11015.7812	Line 2 Seg C
3643.8156	11016.0926	3643.812	11016.0554	GF1
3643.812	11016.0554	3643.7982	11016.1148	GF2
▶ 3643.7982	11016.1148	3643.7868	11016.0488	GF3
3643.7868		0	0	
*		0	0	

LogicAll Solutions



Below is an example of how the same coordinates show up in the Global version of our software.



Detailed instructions on entering and transferring production lines are provided in the user manuals.

Thank you for your interest in our Products.

LogicAll Solutions

www.LogicAllSolutions.net